

HEBE'S WEB

at www.hebesweb.com

FERNANDO SOR

Study, op. 29 no. 20

for solo guitar

edited by Brian Jeffery

**from The Complete Studies, Lessons, and Exercises
of Sor (Tecla 101)**

Hebe's Web

A10320

The music in this file is taken from the book entitled *The Complete Studies, Lessons, and Exercises* of Sor edited by Brian Jeffery (Tecla 101), which is the authoritative edition of this music and contains all Sor's studies for guitar as well as all his other music which he composed especially for students, 97 pieces in all.



The text of Tecla 101 is rigorously authentic, newly edited directly from the original editions. Any fingering is the composer's own and none has been added here. You can see this piece here online, or you can have this printed book sent to you by post worldwide at a low price. See www.tecla.com/catalog/0309.htm. For more details about Sor and his music, see www.tecla.com/authors/sor.htm.

You are welcome to use this document for your personal use only (and in classes or performances in which you are yourself a participant). You are asked not to make copies for anyone else.

Hebe's Web provides many other files and documents for performance and for study and research purposes. Items are available in electronic form and also often in printed form for supply by post worldwide.

This document is copyright © by Tecla Editions and Hebe's Web, 2000. Hebe's Web is a division of Tecla Editions.

STUDY 20

Cette étude doit être jouée presque piano, mais on doit attaquer les cordes à l'endroit où les vibrations sont plus prolongées.

From the original edition

This study must be played almost piano, but the strings should be plucked at the point where the vibrations will last longest.

Moderato

⑥ = D

5

10

15

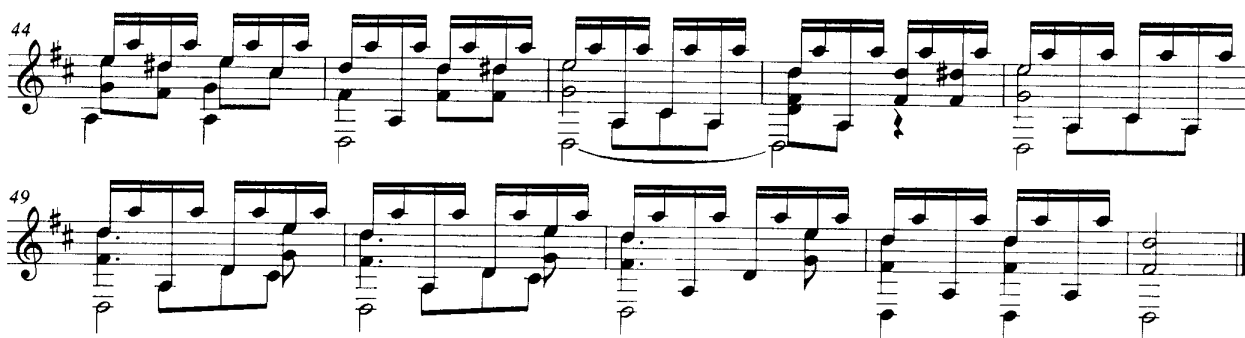
20

25

29

34

39



TECLA 101

© Tecla Editions 2000