

## 江南情景組曲

## KIANGNAN SUITE

(1) 田間曉唱 VILLATIC MORN

儲望華曲  
Chu Wang-Hua

**Largo**  
m.d. m.s. *ff*

**Moderato grazioso**  
*mp* *dim.* *p*

*mp* *più p*

*mp* *mf cresc.* *f sf*

## (2) 紡紗謠 WEAVING SONG

Moderato cantabile

*p* *legato*  
*sempre pp* *legato*

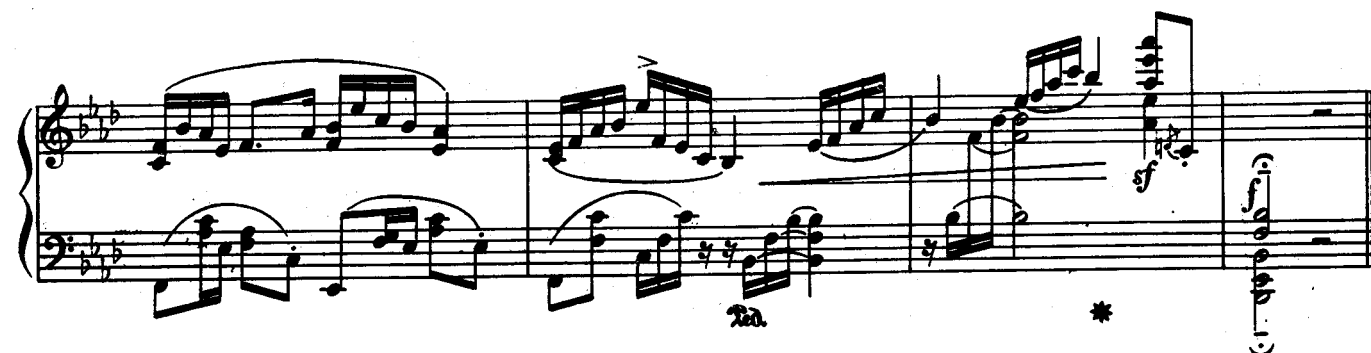
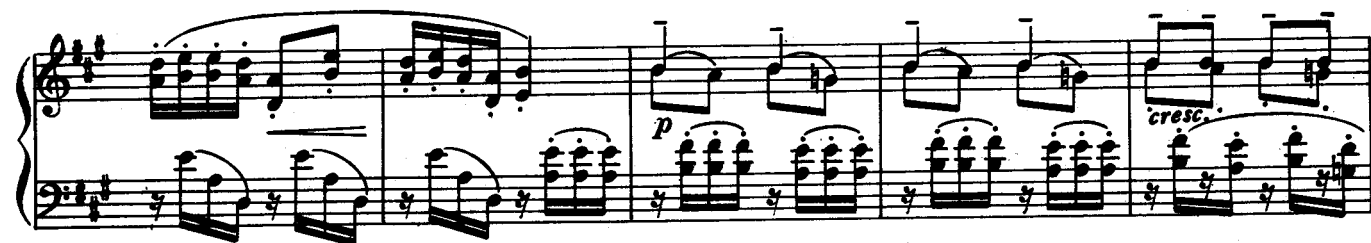
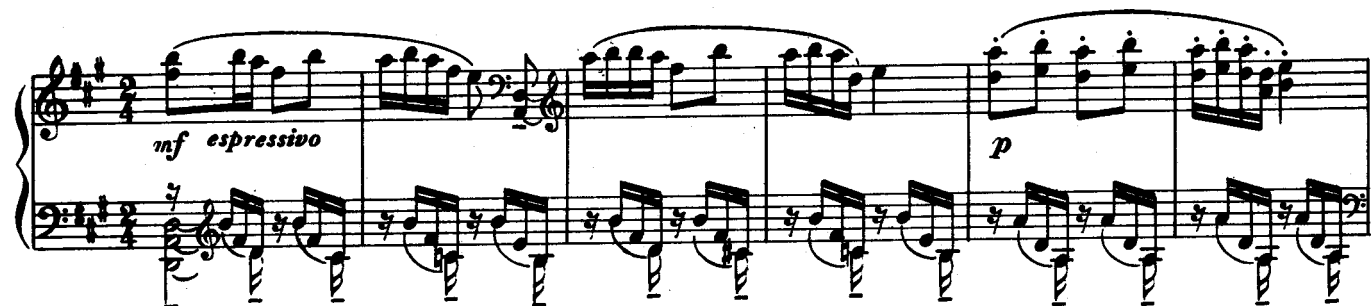
*p*

*mp*

*mp* *dim.* *pp*

## (3) 堤邊春柳 THE SPRING LAKE

Leggiadro moderato allegretto

*poco rit.*

## (4) 短訴 TÊTE - A - TÊTE

Lamentando andante

mp

pp

pp

poco a poco cresc.

f

dim.

mp

pp

rit.

ppp

## (5) 蕩湖船 ROAMING BOAT

Allegretto

Musical score for "Roaming Boat" (蕩湖船) in 2/4 time, Allegretto tempo. The score consists of six systems of piano and bass staves. Dynamics include *pp*, *p*, *mf*, *sf*, *f*, and *mp*. The piece ends with a double bar line and an asterisk.

più vivo

*f*

*mp* *staccato* *sempre*

*mp* *f sf* *mp* *f sf* *mp*

*dim.*

*pp* *cresc.*

*meno mosso*

*ris.* *f* *ff largamente* *sfz*

Detailed description: This page of musical notation consists of six systems of staves. The first system includes a treble and bass staff with a key signature of one sharp (F#) and a 3/4 time signature. It features a variety of note values, including eighth and sixteenth notes, and rests. Dynamics include *f* (forte) and *mp* (mezzo-piano). The tempo marking *più vivo* is present. The second system continues the melodic and harmonic development. The third system introduces a series of chords and arpeggiated figures, with dynamics *mp*, *f sf* (forte sforzando), and *mp*. The fourth system features a descending melodic line in the treble and a corresponding bass line, with a *dim.* (diminuendo) marking. The fifth system shows a *pp* (pianissimo) section followed by a *cresc.* (crescendo) section. The sixth system begins with a *meno mosso* (less motion) tempo change, followed by a *ff largamente* (fortissimo, broadly) section and a final *sfz* (sforzando) chord.