

SUITE

(Orig.: c-Moll)

1. PRELUDE

BWV 997

⑥ = D

5

8

11

Ossia:

14

17

21

24

27

30

33

36

Ossia :

39

54

54

2. FUGA

⑥ = D

5

9

⑤

④

①

②

③

④

⑤

⑥

⑦

⑧

⑨

⑩

⑪

⑫

⑬

⑭

⑮

⑯

⑰

⑱

⑲

⑳

㉑

㉒

㉓

㉔

㉕

㉖

㉗

㉘

㉙

㉚

㉛

㉜

㉝

㉞

㉟

㊱

㊲

㊳

㊴

㊵

㊶

㊷

㊸

㊹

㊺

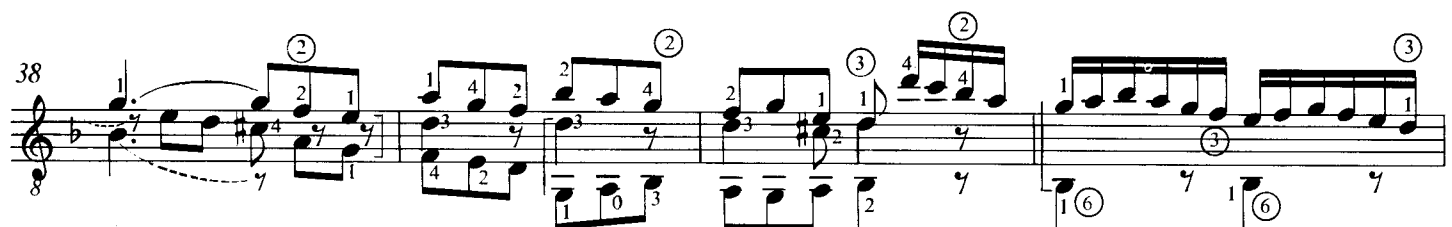
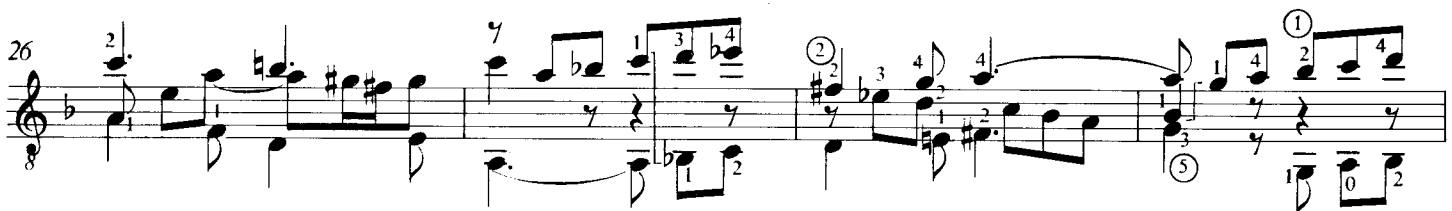
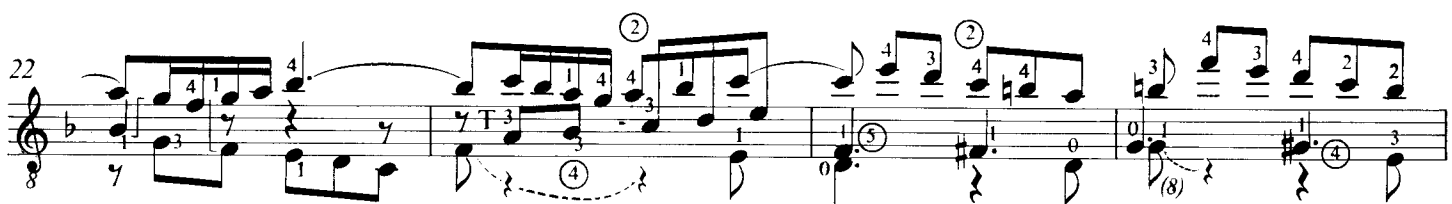
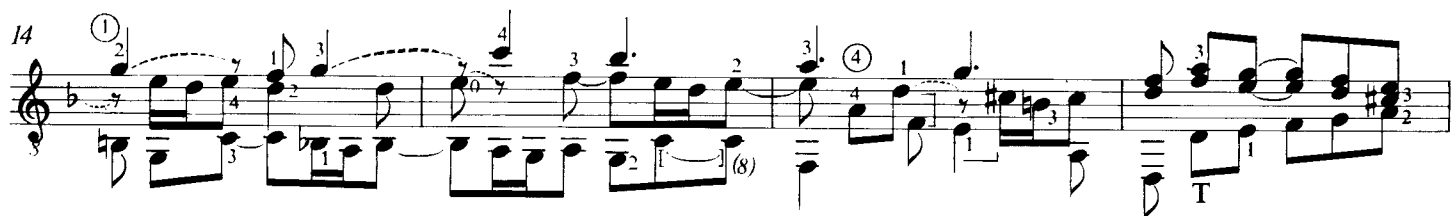
㊻

㊼

㊽

㊾

㊿



Ossia:

42

46

50

53

56

59

63

(8)

66

69

72

75

78

82

85

[illegible][illegible]

100

8

4

1

2

2

3

4

2

3

4

3

4

4

2

3

4

1

4

1

1

4

3

4

1

4

3

2

3

3

2

4

5

104

8

2. (6)

4

2

1

3

2

3

4

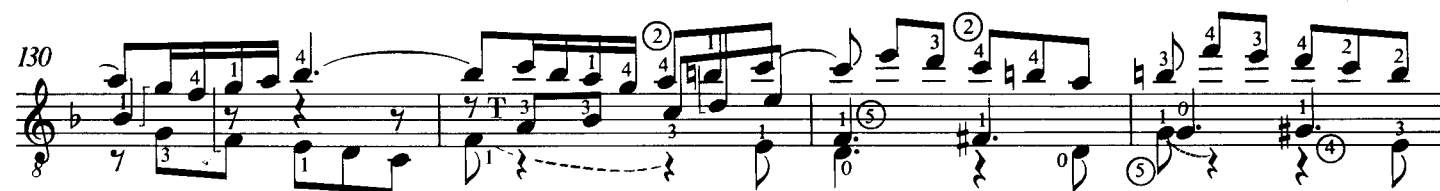
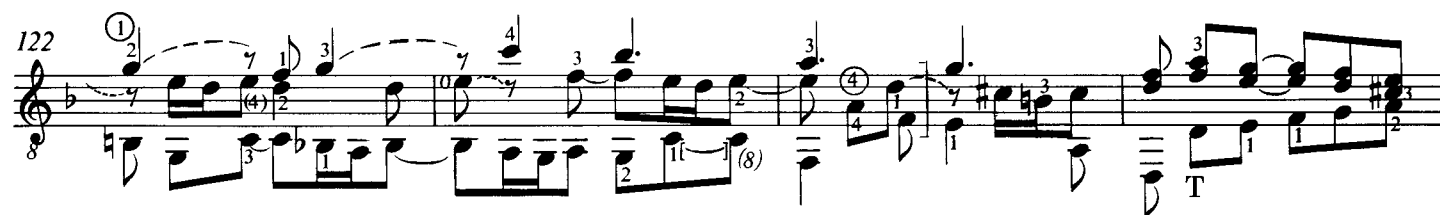
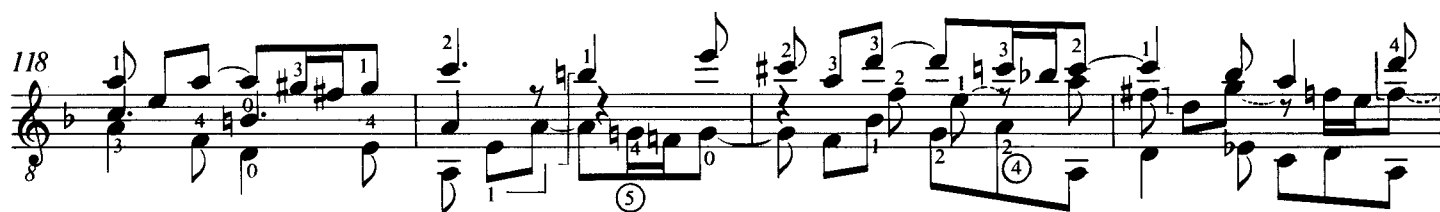
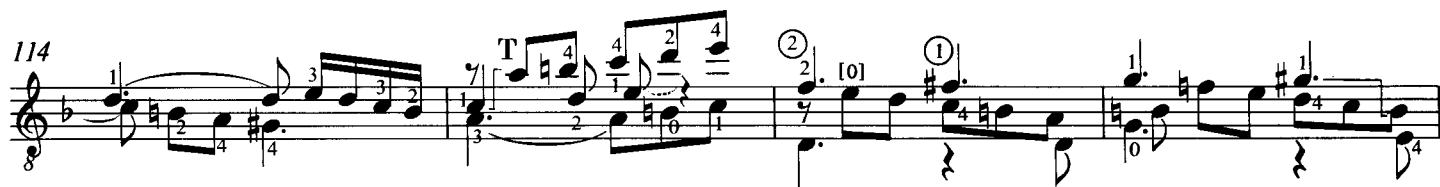
2

4

0

3

T



[illegible]

3. SARABANDE

The musical score for 'The Rose Tree' is presented in two systems. The first system begins with a treble clef, a key signature of one flat (B-flat), and a 3/4 time signature. The tempo is marked 'Moderato'. The melody is written on a single staff, with fingerings indicated by numbers 1-4. The second system continues the melody, also with fingerings. The score is for a single melodic line, likely for a voice or a single instrument.

4. GIGUE

[Tempo di siciliano]

6 =D

5

10

15

19

24

28

32

36

40

44

5. DOUBLE

[Tempo di giga]

⑥ = D

4

7 8 1 2 3 4 5 6 7 8

10 8 1 2 3 4 5 6 7 8

13 8 1 2 3 4 5 6 7 8

16 8 1 2 3 4 5 6 7 8

19 8 1 2 3 4 5 6 7 8

22 8 1 2 3 4 5 6 7 8

25 8 1 2 3 4 5 6 7 8

*) Az első ujj barréban
The 1st finger in barré
Der 1. Finger in Barré

28

31

34

37

40

43

46

*) Az első ujj barrében
The 1st finger in barré
Der 1. Finger in Barré